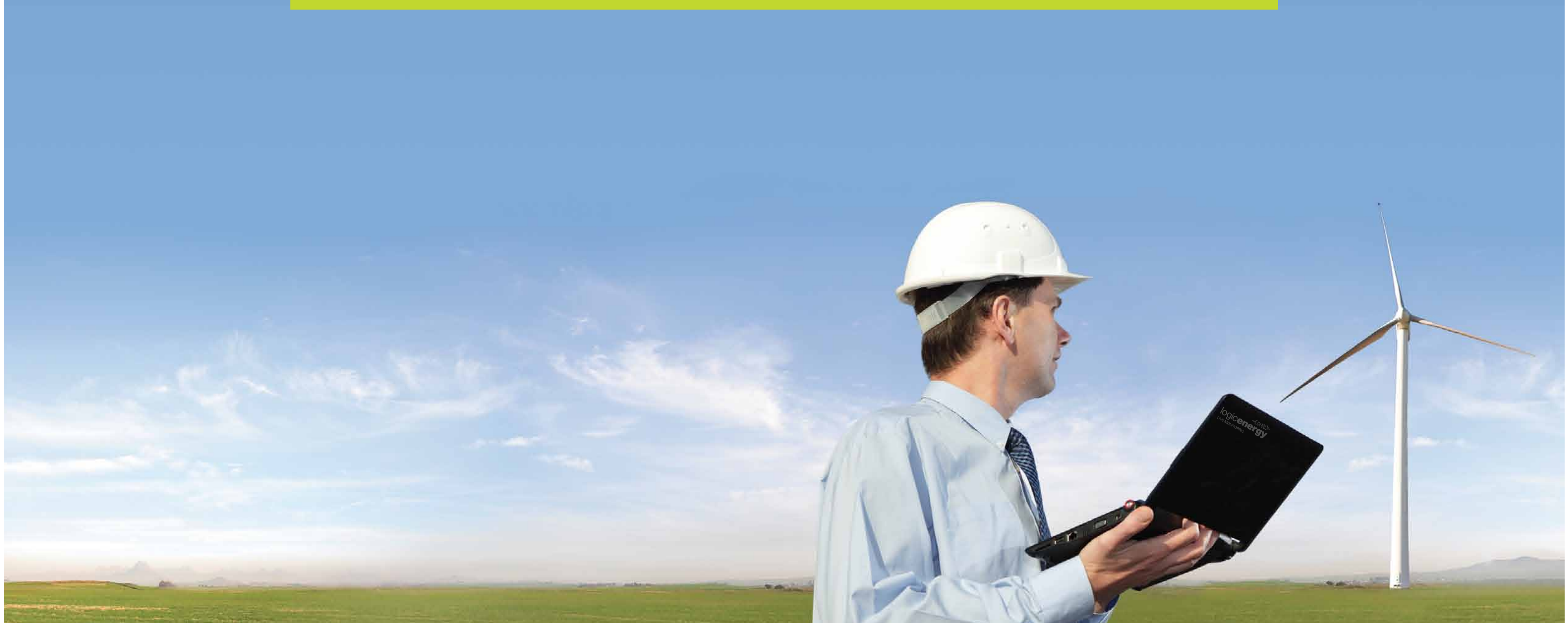


1 Ainslie Road, Hillington Park, Glasgow G52 4RU, Scotland, UK
> T: +44 (0)141 585 6496 > F: +44 (0)141 585 6497
> E: logic@logicenergy.com > www.logicenergy.com



Instant real-time
energy monitoring
...anywhere



Logic Energy is a leading provider of live remote monitoring systems for the renewable energy sector. Our systems have been developed with simplicity and value for money in mind, to enable you to efficiently monitor installations remotely and cost effectively.

When working with renewable technology it is vital to monitor, manage and control your installations with live data. Logic Energy's live monitoring system provides knowledge when you need it most in order to diagnose faults quickly and constantly monitor performance. Live monitoring can significantly reduce the risk of losing important data, and improve your responsiveness and customer service.

All you need is an Internet connection and you have access to system health and performance from anywhere in the world.

At Logic Energy we understand the importance of control. Our online displays give you access to key information such as wind speeds, solar radiation, power used and the volume of greenhouse gases avoided. The Logic Energy system allows you to initiate a proactive response without investing in expensive bespoke software.



"Our company provides 24/7 service to our customers, and it is vital for us to know that our systems are running properly at all times. The live information from Logic Energy's solution ensures peace of mind and allows us to deliver a proactive approach, keeping our customers satisfied round the clock."

Derwent Hydroelectric Power Ltd

Logic Energy Puts You in Control

- 24/7 automated supervision of your customer installations
- Monitor all your sites using our unique centralised Site Manager
- Set Alarm conditions and receive automated email/SMS/call alerts
- Access online live information 24/7 in a simple, compelling format
- Track the power production of your products with real-time and historical data
- No expensive software to maintain
- Works with all renewable energy installations

Complete Management Platform

Our system allows multiple levels of hierarchy: distributors can see their own installations, and their reseller's installations too – offering one of the most complete management platforms available.

Customer Services

When you sell a new renewable energy installation you enter into a long term support agreement with the customer - but what about the risks? How will you support the system? How will you know if the system is performing?

If you can't answer these questions with confidence your business is taking unnecessary risks and potentially compromising your customer relationship. Live monitoring allows you to:

- Improve your approach: Deliver a proactive service at all times
- Increase Efficiency: Be aware of system faults before your customer

"Our client wanted a simple, non technical system that could give us the information we needed in a matter of seconds to allow us to monitor wasted energy. Logic Energy's solution solved our problem."

Renewable Energy Consultant, UK

Logic Energy Products

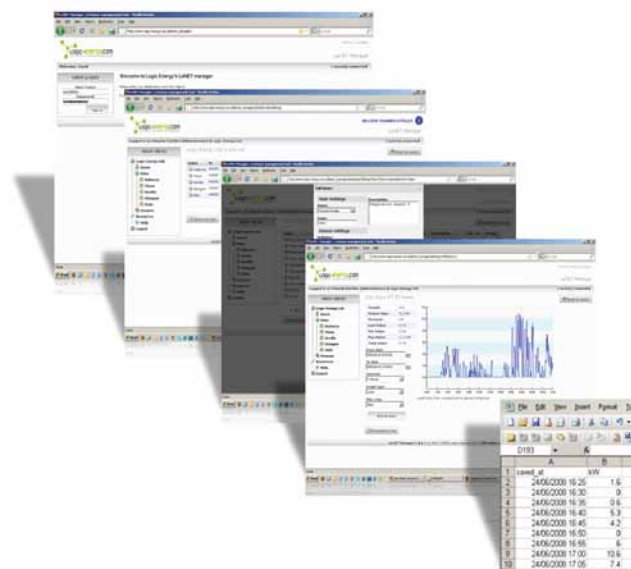
Our main products are LeNET, LeNET_{mobile} and LeSENSE. Combined, they provide a service that allows you to log, supervise, organise and analyse data from your assets quickly and effectively from anywhere in the world.

Without Live Monitoring you run the risk of losing important data, wasting time and money.

Our system monitors and provides online status reports using live data. We monitor variables from energy use to production, weather conditions and temperatures. All you need to access this information is a web browser.

LeNET, LeNET_{mobile} and LeSENSE enable you to:

- Remotely supervise your assets
- Set alarm conditions
- Schedule Email reports
- Display live information
- Easily store GigaBytes [GB] of data
- Use digital dashboards to provide a clear overview for online and public displays



LeNET_{mobile}

In remote locations Logic Energy's new GPRS solution allows you greater efficiency. GPRS is fast becoming the preferred router of choice for remote monitoring, since network coverage is often stronger than Internet coverage in these areas.

Logic Energy are continually developing new products to deliver the best possible service to our customers.

Customer Groups

The Logic Energy solution comes from our experience in dealing with leading installers, manufacturers and consultants in the renewable energy sector.

One major benefit of our system is the ability to compare your energy output against expected return. This gives you the information to improve performance in the long term while also increasing customer satisfaction in the short term. Customer groups include:

- Renewable Energy Consultants
- Wind Turbine Manufacturers and Installers
- Solar and Photovoltaic Panel Manufacturers and Installers
- Hydro Electric Installers and Suppliers



"Logic Energy's public displays allowed our customer to showcase the energy they are producing to the public, while giving them the ability to measure how effective their investment was and how actual output compares to projected energy generation."

Renewable Energy Consultant, UK - River Cottage